

062162

RECEIVED
LARAMIE COUNTY
CHEYENNE, WY.

'89 SEP 25 PM 1 59

CERTIFIED LAND CORNER RECORDATION

DESCRIPTION OF CORNER EVIDENCE FOUND, AND ORIGINAL RECORD (if known)

W.C.
S.10 S.11
S.15 S.14
T.14N., R.70W.
6th P.M.

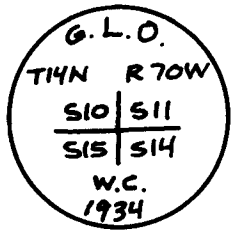
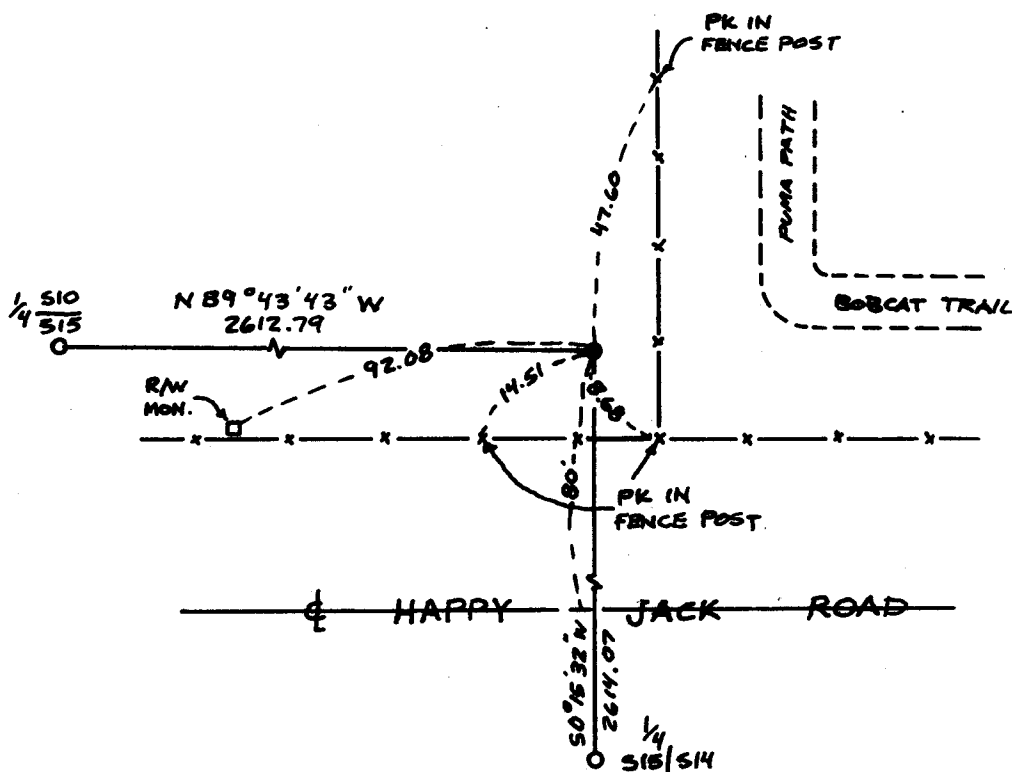
Found standard G.L.O. monument projecting 4" above ground in small mound of stone.
G.L.O. Record: Set an iron post, 3' long, 2" diameter, 27" in ground for the witness corner of secs. 10,11,14 and 15, with brass cap stamped as shown below, with mound of stone, 0.1 chains North of true section corner. location.

DESCRIPTION OF MONUMENT AND ACCESSORIES ESTABLISHED TO PERPETUATE THE ORIGINAL LOCATION OF THIS CORNER:

At the corner: Not remonumented.

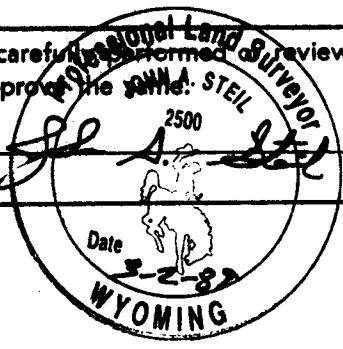
Accessories : See ties below.

SKETCH, WITH COURSE AND DISTANCE TO ADJACENT CORNER IF DETERMINED IN THIS SURVEY. (May Sketch or Paste Reproduction on Reverse Side.)



I, John A. Steil certify that I have carefully examined and reviewed the work done on the diagrammed corner as reported on this recordation form and approve the same.

Signature of Surveyor [Signature] L.S. 2500 Registration No.



STATE OF WYOMING,
Office of Clerk and Recorder,
County of _____

This "corner record" was filed for record on the _____ day of _____, 19____, was noted on the cross-index plat and is assigned page No. _____, in book No. _____.

County Official

Cross Index No. <u>I-17</u>	T. <u>14N</u>	R. <u>70W</u>	Mer. <u>6th</u>
_____	T. _____	R. _____	Mer. _____
_____	T. _____	R. _____	Mer. _____
_____	T. _____	R. _____	Mer. _____
_____	T. _____	R. _____	Mer. _____
_____	T. _____	R. _____	Mer. _____
_____	T. _____	R. _____	Mer. _____